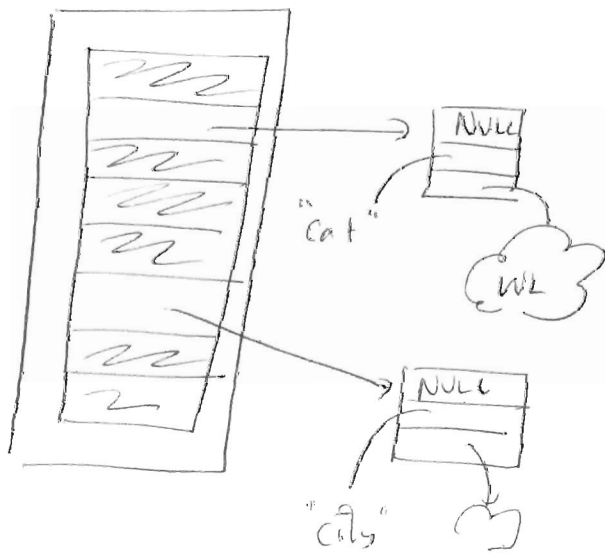


Word Map Hash — Part 2.



It is ok to have only an array in the top node

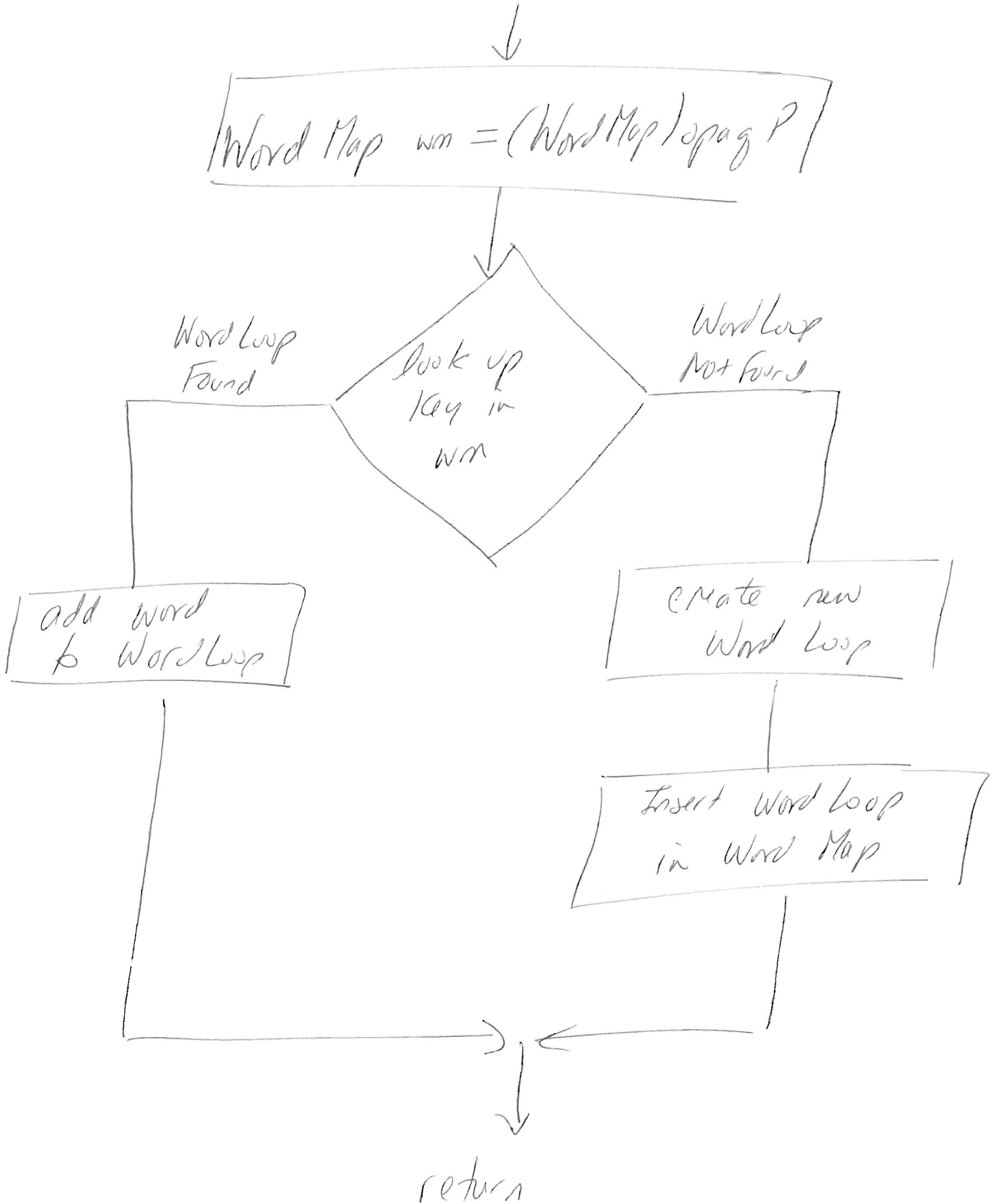
```

struct WordMapNode {
    struct HashNode * [nm];
}

```

Insert Key Value Wo-1

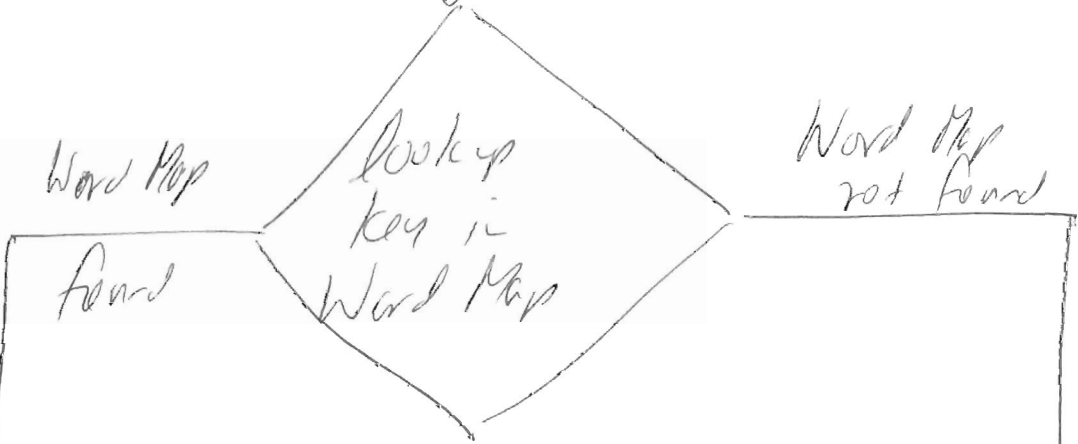
②



Look up key WG I

3

Word Map wm = (Word Map) of page



Word Map found

Word Map not found

retV = next word in loop

return NULL

Advance word loop

return retV