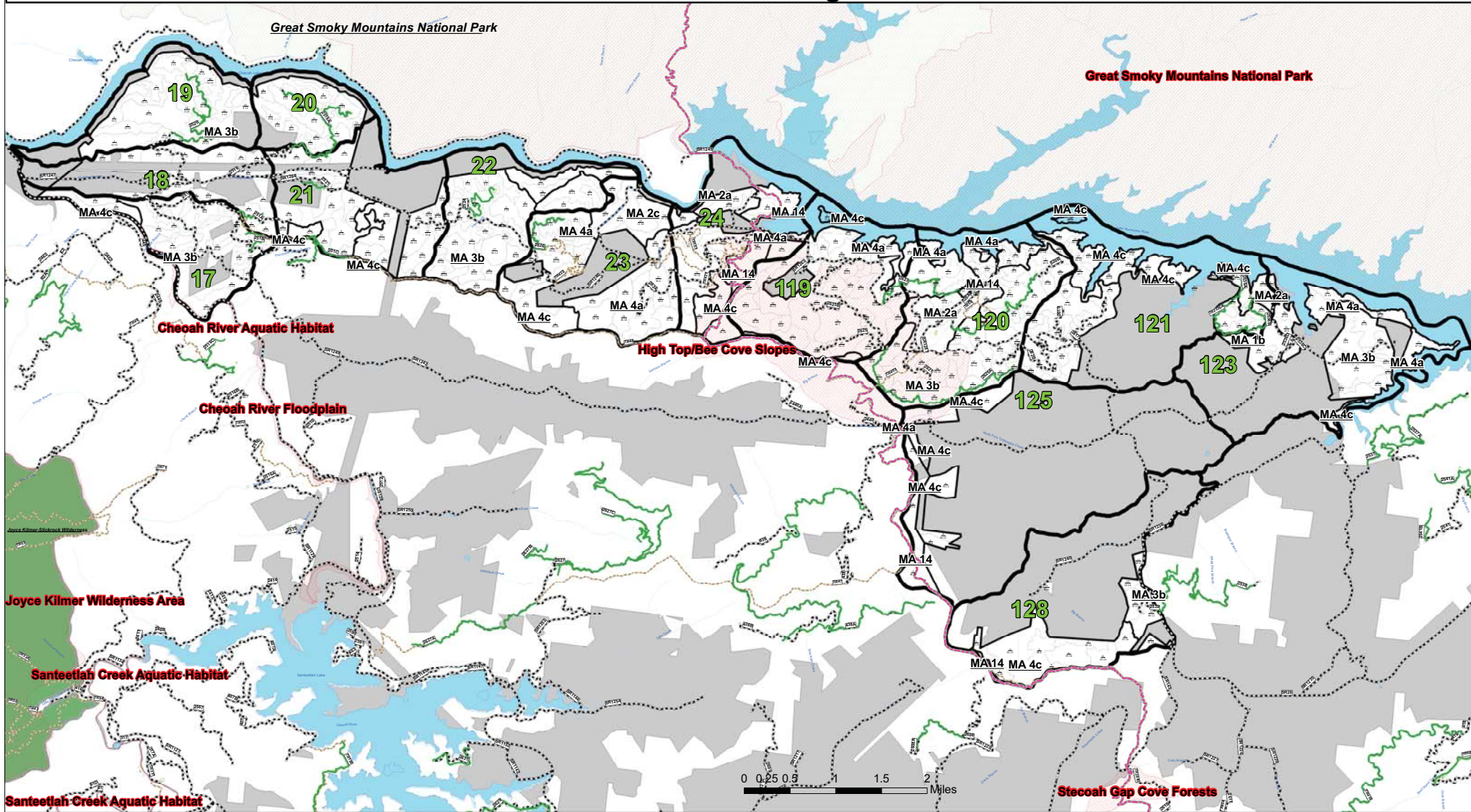


Rapid Assessment-Fontana Project 2009

State Natural Heritage Areas



Legend

- September 16, 2009
- Compartment
 - State Natural Heritage Areas
 - Stands
 - PRIVATE LAND
 - USDA FOREST SERVICE
 - Appalachian Trail
 - Wilderness
 - Linear Wildlife Openings
 - Wildlife Openings



Disclaimer:
The Forest Service uses the most current and complete data available. GIS data and product accuracy may vary. They may be developed from sources of differing accuracy, accurate only of certain scales, based on modeling or interpretation, incomplete while being created or revised, etc. Using GIS products for purposes other than those for which they were created, may yield inaccurate or misleading results. The Forest Service reserves the right to correct, update, modify, or replace, GIS products without notification. For more information, contact:
GIS Coordinator
USDA Forest Service
National Forest in North Carolina
P.O. Box 2750
Asheville, NC 28802-2750

