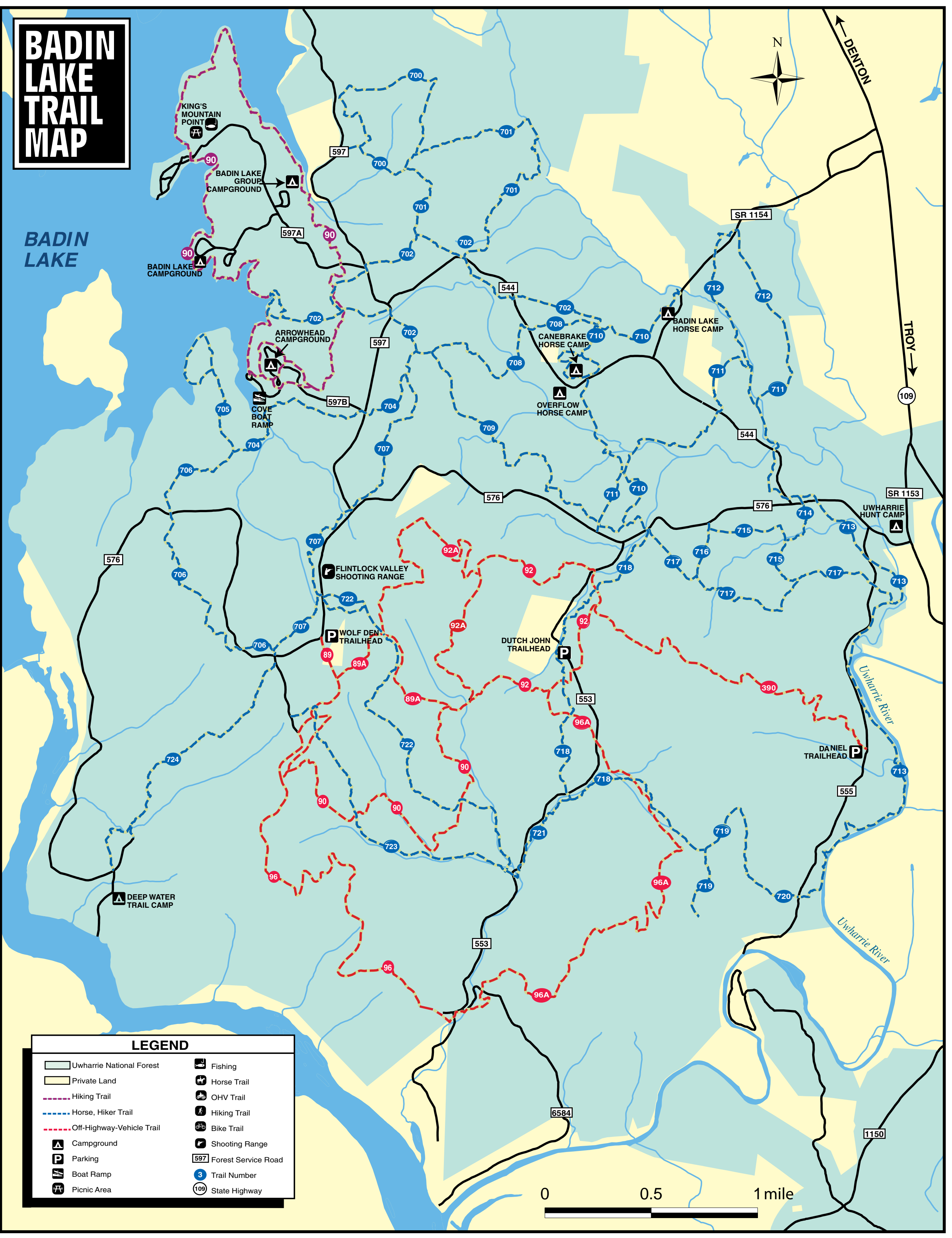


# BADIN LAKE TRAIL MAP

- 90** Badin Lake: 5.6 miles  
Blaze: White  
Rating: Easy
- 700** Greg's Loop: 1.7 miles  
Blaze: Green  
Rating: Easy
- 701** Blackburn: 2.2 miles  
Blaze: Green  
Rating: Easy
- 702** Josh/Lake: 3.1 miles  
Blaze: Green  
Rating: Easy
- 704** Leslie: 1.2 miles  
Blaze: Dark Green  
Rating: Moderate
- 705** Big Rock Loop: 1.2 miles  
Blaze: Dark Green  
Rating: Moderate
- 706** Tony: 1.8 miles  
Blaze: Dark Green  
Rating: Moderate
- 707** Todd: 2.1 miles  
Blaze: Dark Green  
Rating: Moderate
- 708** Indian: 1.1 miles  
Blaze: Magenta  
Rating: Easy
- 709** Megan: 1.7 miles  
Blaze: Magenta  
Rating: Easy
- 710** Home: 2.5 miles  
Blaze: Magenta  
Rating: Easy
- 711** Larry: 1.5 miles  
Blaze: Magenta  
Rating: Easy
- 712** Helen's Loop: 2.2 miles  
Blaze: Magenta  
Rating: Easy
- 715** River: 3.6 miles  
Blaze: Salmon  
Rating: Moderate
- 714** Wren: 0.3 mile  
Blaze: Salmon  
Rating: Easy
- 715** Tanager: 0.7 mile  
Blaze: Salmon  
Rating: Easy
- 716** Rudolph: 0.3 mile  
Blaze: Salmon  
Rating: Easy
- 717** Burl Tree Way: 1.7 miles  
Blaze: Salmon  
Rating: Easy
- 718** Morgan: 1.7 miles  
Blaze: Salmon  
Rating: Easy
- 719** Hang Glider: 1.4 miles  
Blaze: Salmon  
Rating: Difficult
- 720** Buttermilk: 1 mile  
Blaze: Salmon  
Rating: Moderate
- 721** Berner: 0.6 mile  
Blaze: Yellow  
Rating: Easy
- 722** Fraley: 2.5 miles  
Blaze: Yellow  
Rating: Difficult
- 723** Bates: 1.7 miles  
Blaze: Yellow  
Rating: Moderate
- 724** Robbins: 1.7 miles  
Blaze: Yellow  
Rating: Easy
- 89** Wolfden: 1.3 miles  
Blaze: Orange  
Rating: Easy
- 89A** Slab Pile: 1.2 miles  
Blaze: Orange  
Rating: Moderate
- 90** Dutch John: 2.1 miles  
Blaze: Orange  
Rating: Difficult
- 92** Rocky Mtn. Loop: 2.8 miles  
Blaze: Orange  
Rating: Difficult
- 92A** Sawmill: 1.6 miles  
Blaze: Orange  
Rating: Moderate
- 96** Falls Dam: 2.8 miles  
Blaze: Orange  
Rating: Easy
- 96A** Dickey Bell: 3.5 miles  
Blaze: Orange  
Rating: Moderate
- 390** Daniel: 2.1 miles  
Blaze: Orange  
Rating: Extremely difficult



### LEGEND

Uwaharrie National Forest	Fishing
Private Land	Horse Trail
Hiking Trail	OHV Trail
Horse, Hiker Trail	Hiking Trail
Off-Highway-Vehicle Trail	Bike Trail
Campground	Shooting Range
Parking	Forest Service Road
Boat Ramp	Trail Number
Picnic Area	State Highway